

單粒水分計

SINGLE KERNEL MOISTURE TESTER

CTR-500ES

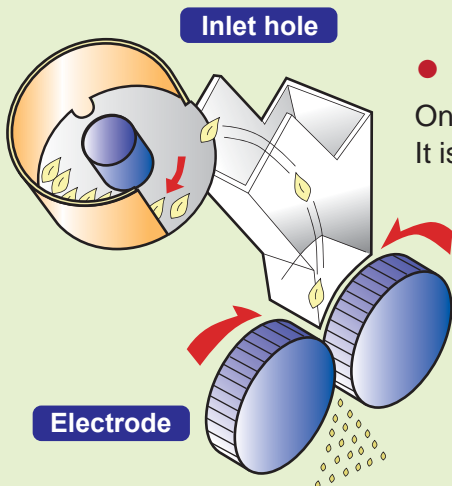
Measure the moisture of each kernel precisely



• Bias printing in Bar graph

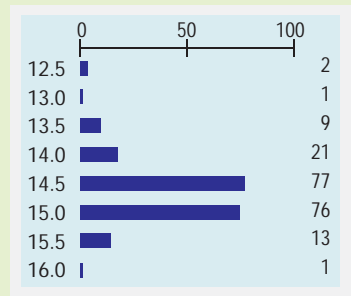
The moisture of each single kernel is measured precisely.

The result is shown by bar graph and the deviation of moisture content is shown clearly.



• Automatic test, Easy operation

One touch: press "Measure" button and start the testing.
It is convenient to test on large volume samples.



• High moisture content can also be measured

Wide test range in moisture content.

Suitable for high moisture before drying and low moisture after drying.

(For testing paddy, the highest moisture acceptance is 40%)

Multi-functions ; Multi-purposes ; High preciseness.

Decide proper harvest time

Test the moisture before harvest can help you decide the correct harvest time.

Moisture test before drying equipment

- High moisture content is acceptable. (For testing paddy, the highest moisture acceptance is 40%)
Able to test the moisture rate from purchasing.
- Improve drying efficiency by applying 2-stage drying according to the moisture content and deviation.
- Assure the moisture and moisture deviation after drying.

Moisture management for processing

- Millers can use it as a guidance before processing.
- Flour making factory can use it as a guidance before production.

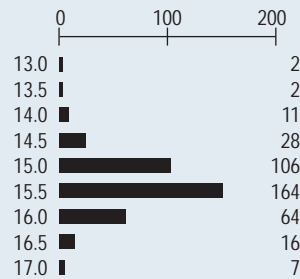
Moisture label

- Provide moisture content in print for contenting customer when sales

Print-out sample

Small deviation of brown rice after drying

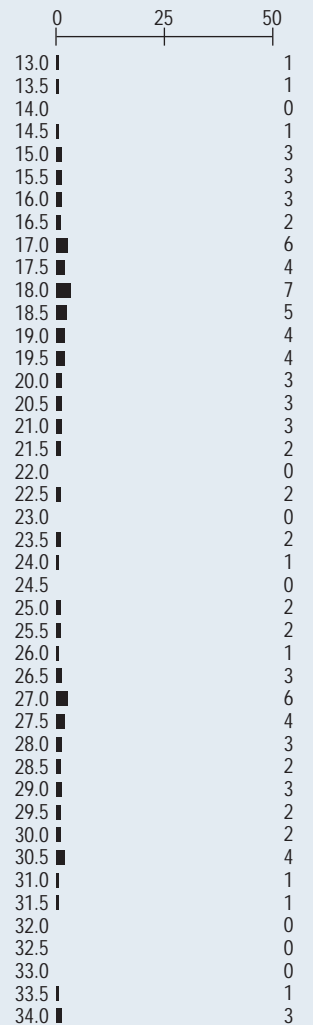
Date 10 Aug. 2012 10:10



Kernel = 400
Average = 15.4 %
STD Deviation = 0.71%
Grain = Brown Rice
Average Temp. = 23.2°C

Big deviation of paddy after harvest

Date 10 Aug. 2012 10:10



Kernel = 100
Average = 22.5 %
STD Deviation = 5.60%
Grain = Paddy
Average Temp. = 28.5°C

Main specifications

Model	CTR-500ES		
Test method	Direct current resistance		
Test time	Approx 60 sec-/100sec (brown rice)		
kernel volume	20 · 50 · 100 · 150 · 200 · 300 · 400 · 500		
Grains (test range) Under ambient temp 20°C	Brown	(Japan)	10.7~approx20%
	Polished Rice	(Japan)	10.1~approx20%
	Wheat	(Japan)	10.0~approx40%
	Paddy(long)	(Japan)	8.4~approx40%
	Polished rice(long)	(Thailand)	9.5~approx20%
	Standard		9.0~approx45%
	Drying brown rice	(Japan)	9.7~approx40%
Paddy	(Japan)	10.0~approx40%	
Correction	Correct according to ambient temperature		
Accuracy	13~18% for brown rice±0.5%(105°C)		
Accuracy of repetition	Brown rice (15%) bias within 0.1%		
Display	Green 7 levels by LED display		
Input /Output	RS-232C		
Remote control	Commence remote control from PC signal		
Adjustment	Difference adjustment ±2.0%		
Environment	Temp 0~40°C Humidity Below 85%(without dew)		
Power	AC110V±10% 50/60HZ		
Electricity	120VA		
Dimensions	252(W)×255(L)×305(H)mm (exclude protruding object)		
Weight	13.3 kg(Net weight)·15.3 kg(Gross weight)		
Accessory	Testing spoon,testing wheel×5 types brown rice, Polish rice(high speed),Paddy, Wheat(high speed), Barley, Big wheat, Paddy(long),Rice(long/high speed)		

SUNCUE

SUNCUE COMPANY LTD.

No.396, Minsheng Rd., Wufeng Dist., Taichung City 413, Taiwan (R.O.C.)
TEL: +886-4-2339-7171 FAX: +886-4-2330-2939
www.suncue.com E-mail:suncue@ms10.hinet.net

SHANGHAI SUNCUE MACHINERY CO., LTD.

3039 Huaxiang Road, Minhang District, Shanghai, 201107 China
TEL: +86-21-6221-1839 FAX: +86-21-6221-1848
www.suncue.com